

Y YACHTS

BY MICHAEL SCHMIDT YACHTBAU



Grease

NEW Y8



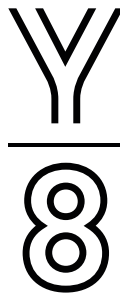
Cool Breeze



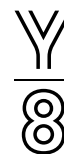
Makai



Vegas Baby



MICHAEL SCHMIDT YACHTBAU
yyachts.de



The Y8 was the first and founding model of YYachts with the design, engineering and construction of "Cool Breeze" – an iconic, light and easy to sail 80ft yacht. Designers like Luca Brenta and David Chipperfield gave her an unforgettable taste and style. "Cool Breeze" was followed by award winning "Ma-kai" – based on the same technical platform but having a semi raised deck and an interior styling from Design Unlimited. "Vegas Baby" is another evolution with a different exterior styling from the drawing board of Lorenzo Argento and with an asymmetric cockpit and several luxury features well integrated. Currently we are building a new Y8.

TECHNICAL SPECIFICATION VEGAS BABY

LOA	23.99 m 78.75 ft
LWL	22.13 m 71.34 ft
Beam	6.00 m 19.69 ft
Draft (fixed keel)	3.50 m 11.68 ft
Displacement (light ship)	approx. 34.50 t 76,059 lbs
Ballast	approx. 12.50 t 27,558 lbs
P	30.28 m 99.30 ft
E	10.46 m 34.30 ft
J	8.75 m 28.70 ft
I	30.05 m 98.60 ft
Mainsail	190.00 m ² 2,045 ft ²
Jib	130.00 m ² 1,399 ft ²
Engine	Nanni Marine Diesel Type T4.230 169.1KW (230 HP)
Hotel Batteries	24 Volt DC, AGM 800 Ah
Fuel Tank	approx. 1,500 l 396 gal
Freshwater Tank	approx. 1,000 l 264 gal
Blackwater Tank	approx. 240 l 63 gal

Naval Architect Luca Brenta & C. Yacht Designers / Lorenzo Argento Yacht Design
Classification Design Category "A" / Recreational Crafts Directive

This is more than an evolution of the previous model. The client was inspired by IMOCA racers and wants to achieve the highest possible speeds. Therefore, a different sail plan was developed, the foresail enlarged and the mast placed further aft. Due to these requirements, the new Y8 also got a wider stern and thus more volume. Combined with different technical installations, this opened up completely new possibilities for the interior design. The interior is developed in-house, while the construction is provided by the ISS Design and World Superyacht Design Awards-winning Surge Projects studio.

PRELIMINARY TECHNICAL SPECIFICATION GREASE

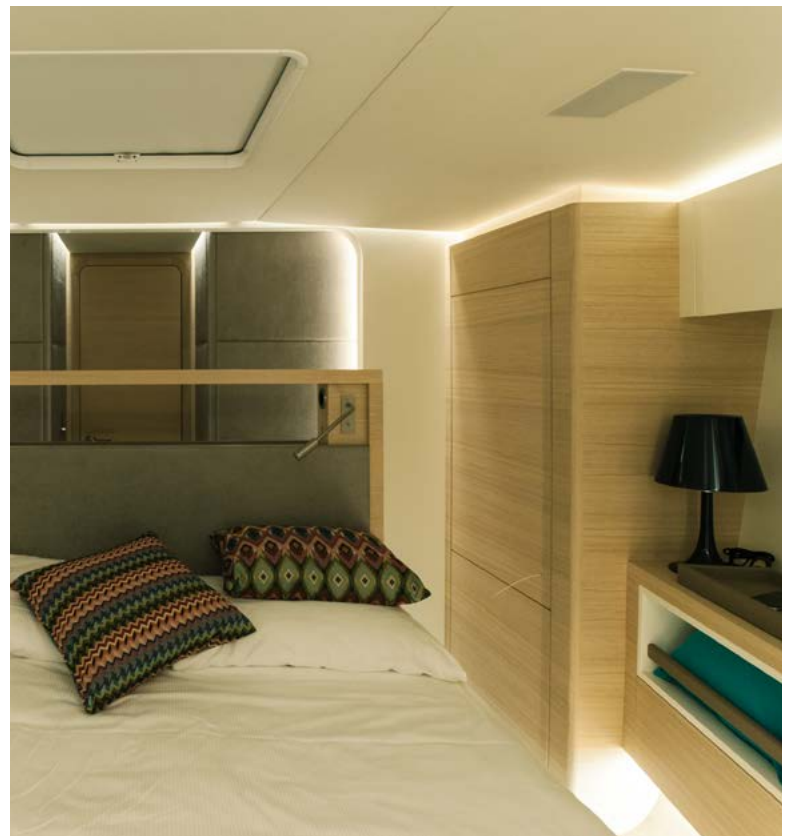
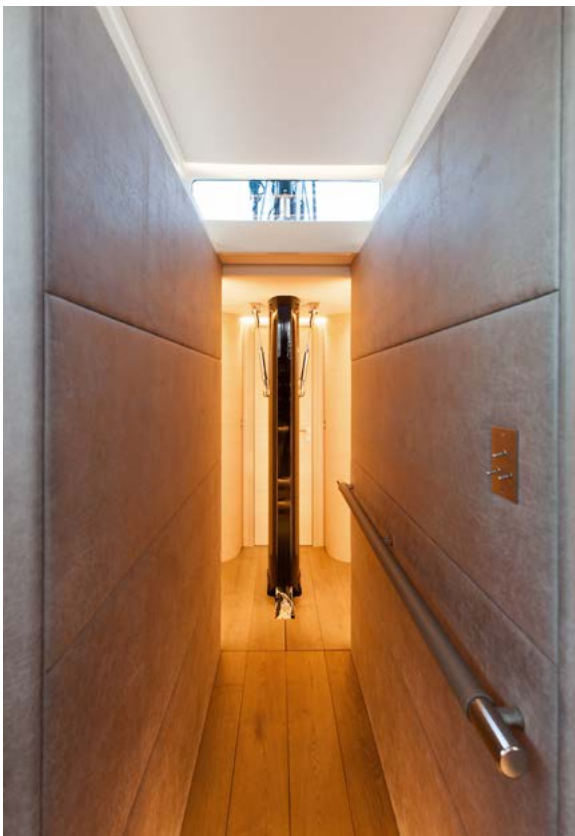
LOA	23.99 m 78.75 ft
LWL	22.40 m 73.50 ft
Beam	6.50 m 21.32 ft
Draft (fixed keel)	4.00 m 13.12 ft
Draft (telescopic keel)	2.80 - 4.30 m 9.20 - 14.10 ft
Displacement (light ship)	approx. 37.90 t 83,555 lbs
Ballast	approx. 13.30 t 29,321 lbs
P	30.60 m 100 ft
E	10.00 m 32.80 ft
J	9.70 m 31.80 ft
I	33.20 m 108.90 ft
Mainsail	196.00 m ² 2,110 ft ²
Jib	152.00 m ² 1,636 ft ²
Engine	2x Nanni N4-115 84.6KW (115HP)
Hotel Batteries	24 Volt DC, 1200 Ah
Fuel Tank	approx. 1,600 l 423 gal
Freshwater Tank	approx. 1,000 l 264 gal
Blackwater Tank	approx. 250 l 66 gal

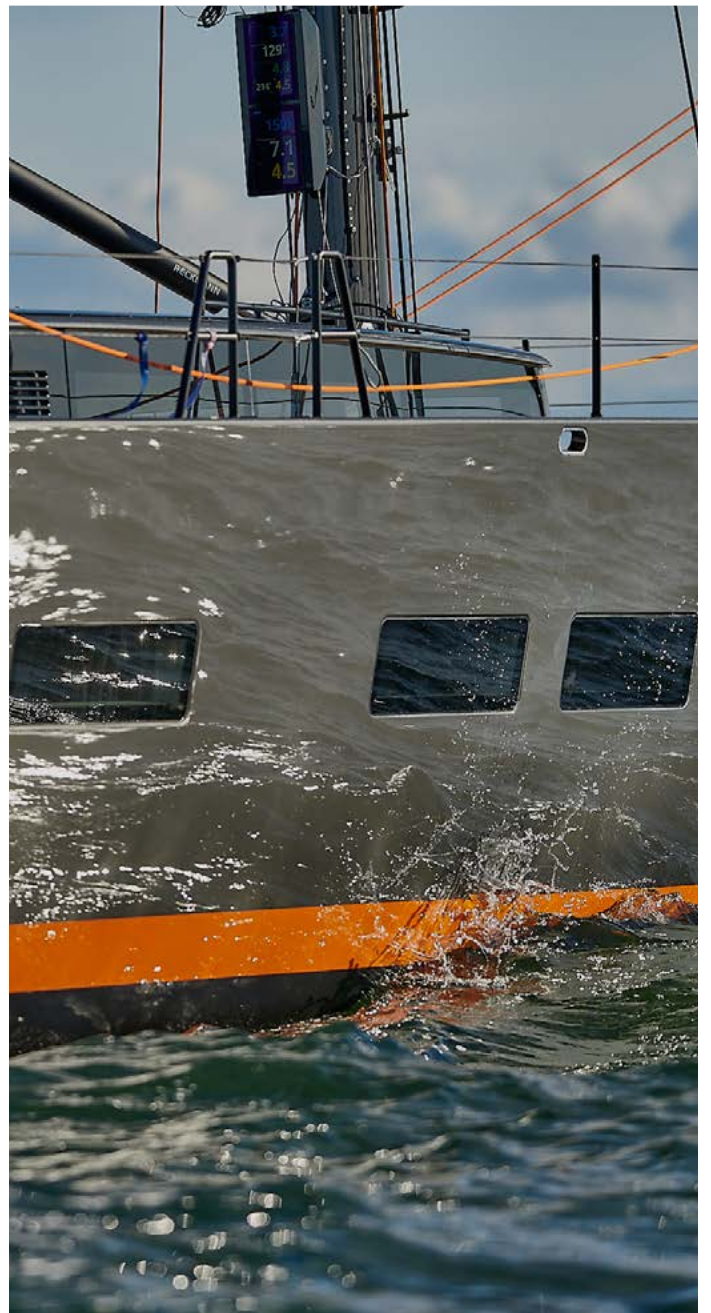
Naval Architect Surge -Projects
Classification Design Category "A" / Recreational Crafts Directive













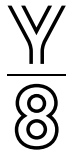






There are numerous options for a layout of a Y8 below deck. With the available options the Y8 can flexibly adapt to your requirements, with the possibility to divide the front and rear living areas. With this division implemented, the crews' cabins, the navigation station, and the galley of the yacht are then located in the stern. This is the ideal layout to maximize privacy and remain undisturbed by the crew. With two cockpit solutions, variable headroom, and an

interior that can be fully adapted to the customer, Y8 is a sailing yacht which is as individual as its future owner. A large dinghy garage with a transversal storage of the tender is a feature nearly all YYachts share so far. With state-of-the-art technology, the yacht can be handled even by a couple or with very small crew. The Y8 is one of the most customizable yachts in the 24 metre range providing speed, design, comfort and ease to use.



PRELIMINARY INTERIOR LAYOUTS

Standard:
Luxury master area frwd
3 cabins plus 1 crew cabin



Option 2:
4 cabins plus 1 crew cabin



Option 3:
5 cabins plus 1 crew cabin



Option 4:
3 cabins plus 1 crew cabin



Option 5:
Master aft cabin with
bathroom en-suite
3 cabins plus 2 crew cabins



Option 6:
Master aft cabin with
bathroom en-suite
4 cabins plus 2 crew cabins



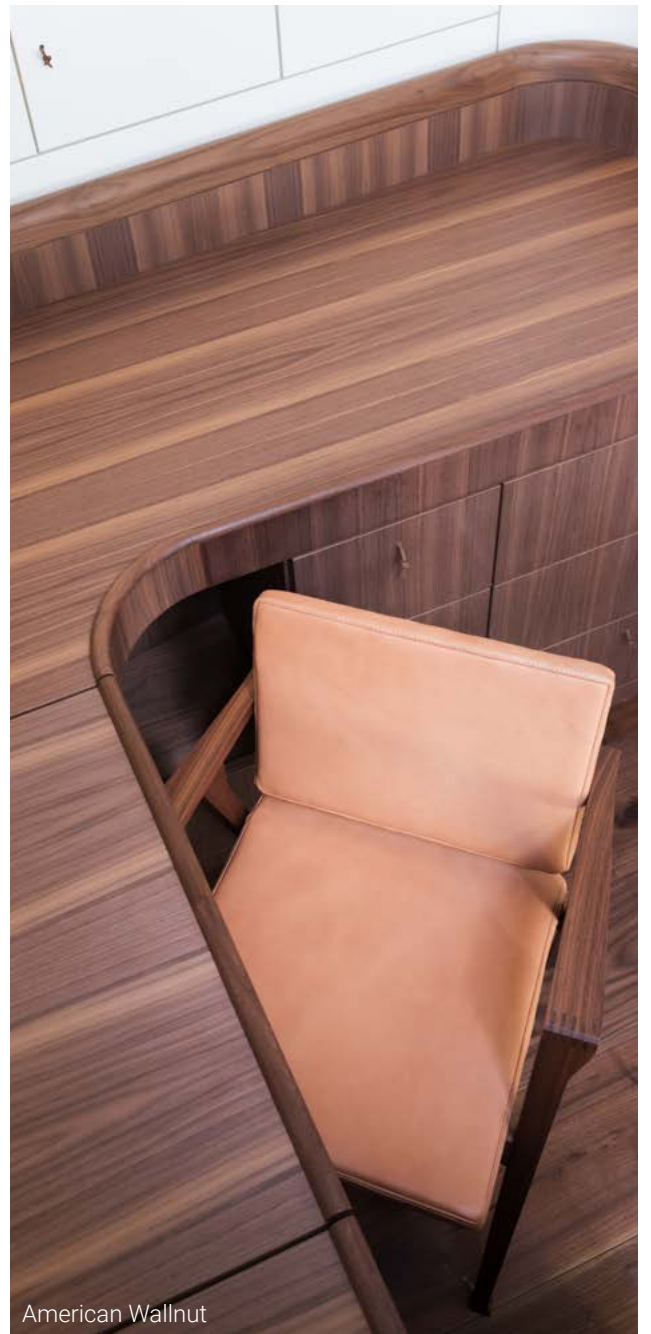




MODERN CLASSIC



Oak Wood



American Walnut

MINIMAL



Smoked Wood



Light Oak Wood - Design studies new Y8



STANDARD DETAILS



