

**TECHNICAL
SPECIFICATIONS
Y6**

LOA approx. 19.65 m
BOW SPRIT EXTENSION approx. 20.50 m
LWL 18.50 m
BEAM 5.75 m

DRAFT
FIXED KEEL 3.50 m
SHOAL DRAFT 2.85 m
DISPLACEMENT (light ship) approx. 25.9 t

BALLAST (fixed) Approx approx. 8.60 t

Mainsail 160 m²
Self-tacking jib 100 m²
Racing Jib 115 m²
Genua 125 m²
Code 0 280 m²
Gennaker 410 m²

ENGINE Yanmar 4JH110 (110 HP)
SD15 Saildrive

ENGINE optional Yanmar 4JH110 (150 HP)
SD15 Saildrive

HOTEL BATTERIES 24 V DC, 800 Ah

FUEL TANK approx. 900 l
FRESHWATER TANK approx. 900 l

BLACKWATER TANK approx. 180 l

YARD
YYACHTS GmbH

NAVAL ARCHITECT
Tripp Design Naval Architecture

INTERIOR DESIGN / STYLING
YYachts Design Team

STRUCTURAL ENGINEERING
AMS

CLASSIFICATION
CE Category „A“

0000 GENERAL

The purpose of the Specification is to define the characteristics of the Yacht in its entirety. The preliminary General Arrangement drawings must be analyzed in conjunction with the Specification to have a complete overview of the Yacht. YYachts undertakes to ensure that the Yacht is built in accordance with the Specification.

The weight of the Yacht fitted with all the equipment listed in the specifications is intended to be the Light Ship Weight without e.g. fuel, fresh water, grey / black water, sails, provisions, passengers and crew. The Displacement is subject to change and will increase by the installation on board of additional equipment, options requested by the client and listed as optional equipment or additional components ordered by the Buyer and not included in the Specification. The weight can increase by the installation of additional options, equipment, different General Arrangement plan, Classification or Flag Administration Compliance requirements and choice of keel options.

Materials and equipment described in the Specification may change in accordance with Classification Society or Flag State requirements. YYachts reserves the right to substitute equipment described in the Specification with equipment having equal characteristics.

0001 FLAG STATE REQUIREMENTS

The Buyer has to inform YYACHTS about the flag under which the Yacht shall be registered and for which purpose. The cost for the Certificate will be calculated and will be written in the contract, changes will add costs and weight of the Yacht. The service for registration, certificates and surveys are not included.

0002 MANUALS AND DOCUMENTS

A handbook for the Yacht will be provided by YYACHTS. Manuals for use and maintenance for all the major equipment installed on the Yacht shall be provided.

User manuals and warranty certificates shall be provided for all the third parties equipment, supplied by the equipment suppliers. In particular, specifications will be provided for fuses, filters and other accessories which frequently need replacement.

0100 COMPOSITE

0110 HULL, DECK AND MAIN STRUCTURES

0111 HULL

The hull will be laminate in a female mold to achieve the shape defined by the naval architect and reduce at minimum the fairing and the related additional weight.

To achieve a maximum strength / light-weight-ratio, the hull is made in a sandwich-construction with CORECELL™ M-foam. The hull outer skin will be built from E-glass to improve hull impact behavior. The inner structure consists exclusively of carbon. Fibres will be used to optimize the performance of the lamination as necessary. The fibres will be impregnated with a high-performance epoxy laminating system and post-cured with high temperature to exploit to the maximum of the fibre properties.

0112 BULKHEADS AND INTERNAL STRUCTURES

All bulkheads and internal structures are made in carbon / epoxy / sandwich, vacuum consolidated. For more strength and better load distribution there are additional carbon fiber reinforcements around doors, cut outs and cable penetrations. Watertight bulkheads will be fitted in the Sail Locker and Lazarette. "Crash box" in the lower bow section for additional safety.

0113 DECK

The Deck is made in a sandwich-construction with CORECELL™ M-foam. The inner and outer structure consists exclusively of carbon. Lamination will be produced on a female mold suitable for vacuum consolidation and post curing of the vinylester resin system that is adopted. Carbon fibers uni-directional and woven will be intensively used to get the best structural performances. Deep set foundations and reinforcement for all deck equipment (tracks, hatches, winches, pedestals, cleats, blocks, etc.) will be of high-density foam inserts or single skin zones with additional local structure.

0114 CHAIN PLATES

Shrouds on V1 / D1 carbon chainplates with stainless-steel bushings structurally integrated into the hull laminate for maximum bonding and excellent load distribution.

0115 BOW SPRIT

Integrated carbon bow sprit with stainless-steel anchor roller and fixing point for the code 0 or gennaker, well separated from the forestay.

0120 COMPARTMENTS

0121 BOW COMPARTMENT

Custom flush deck hatch. Anchor chain storage. Solid laminated anchor windlass foundation. Watertight bulkhead. "Crash box" in the lower bow section for additional safety.

0122 SAIL LOCKER

Flush carbon deck hatch, stainless-steel ladder for easy access. Floorboards, LED overhead light, electric bilge pump and a 230 V socket. Topsides are coated in grey.

0123 LAZARETTE

Large powered custom hatch incl. 2 carbon inspection hatches in aft deck. The carbon bathing platform is integrated in the stern while the transom stays fully closed, even with bathing platform lowered. This significantly increases the boat's safety and keeps the lazarette dry. The transom swimming platform opens electric actuated. There are steps from deck level to the swimming platform.

0124 ENGINE ROOM

The engine compartment for engine and space for optional generator is positioned under the companionway. Special attention was paid to optimum thermal and sound insulation. To achieve extra strength and rigidity, the engine tray is fully laminated to the hull. An automatic fire extinguishing system is installed in the engine compartment. The engine compartment is painted grey for practical and maintenance reasons. All components are concentrated in the compartment, access to the engine room from the salon and aft cabins

0200 INTERIOR

0210 FURNITURE

The standard wood is natural oak. All surfaces are either covered with veneer or HPL. The ceilings are built of plywood panels covered with fabrics and painted liners.

The standard floor is light oak. The floor support grid consists of sound isolated material (plywood / rubber) which is attached to the structure by laminate and/or epoxy glued.

Salon upholstery according to Y Yachts standard. Mattresses on all beds are high quality type. All interior accessories (fabric, lamps, taps, switches, tables, handrails...) according to Y Yachts standard. Floor plates are made of a sandwich construction. In view of maintenance, the floor plates have to be easily removable, and they will be mounted on antivibration insulating material.

0220 CABINS

The Cabins are described for the standard layout. Optional layouts will reflect the general outfit described in this chapter.

0221 OWNER'S CABIN

The owner's cabin features a free standing queen size double island bed and full height hanging wardrobe, drawers and lockers, 230 V AC sockets + USB charging sockets, indirect lighting, direct lighting, reading lights and night courtesy lights. En-suite bathroom is at the forward end of the cabin with PLANUS KONOS electrical toilet with bidet function, large separate shower area, mirror, washbasin integrated on CORIAN countertop according YYACHTS standard and wet locker.

0222 LOWER SALON

The lower salon includes a U galley on starboard-side, and opposite of the galley is a relaxation area with an L-shaped sofa.

0223 AFT PS GUEST CABIN

Guest cabin on PS features twin beds with hanging wardrobe, drawers and lockers incl. 230 V AC sockets + USB charging sockets, indirect lighting, direct lighting, reading lights and night courtesy lights. En-suite bathroom with PLANUS ARTIC electrical toilet, shower area, mirror, washbasin integrated on CORIAN countertop according YYACHTS standard and wet locker.

0224 AFT STBD GUEST CABIN

Guest cabin on STB features twin beds with hanging wardrobe, drawers and lockers incl. 230 V AC sockets + USB charging sockets, indirect lighting, direct lighting, reading lights and night courtesy lights. En-suite bathroom with PLANUS ARTIC electrical toilet, shower area, mirror, washbasin integrated on CORIAN countertop according YYACHTS standard and wet locker.

0225 SALON

Salon features a minimalistic open space arrangement yet with emphasis on different working areas. L-shaped lounge sofas on PS with locker place. Dining table incl. 3 x upholstered chairs and large U-dining bench on STB. Lots of storage space under the sofa and dining bench. 230 V AC sockets, indirect lighting, direct lighting, reading lights and night courtesy lights.

0226 GALLEY

Galley is located on STB fwd part of the salon. CORIAN countertop according YYACHTS standard with integrated single sink, faucet and niche with gimballed gas stove and oven. Stainless-steel refrigerator / freezer with 2 drawers (each drawer individual adjustable as fridge or freezer) and top loading freezer. Lockers, drawers, and waste bin are provided. Indirect lighting, direct lighting and night courtesy light, 230 V AC sockets. Perforated plates for galley drawers with positionable poles in a pre-defined grid to organize galley storage (5 pcs).

0227 NAVIGATION

The navigation area is equipped with instruments and gauges, ergonomically positioned instruments and gauges, space for documents. Red and white reading light, direct lighting and night courtesy light, 2 x 230 V AC sockets, 2x USB sockets.

0300 SYSTEMS

0311 BLACK WATER

Four black water holding tanks with an approx. capacity of 60 l each will be installed. 3x electric PLANUS toilet 24 V DC flushed with fresh water. Discharge possible via own sea cock or deck suction line.

0312 PROPULSION

Yanmar 4JH110 engine (110HP) engine. The engine has a 12 V DC / 125A alternator to charge its starter batteries plus an additional 24 V DC / 65 A alternator to charge the service batteries.

Transmission via Saildrive to a 3-blade folding propeller.

Electric lever engine controls for throttle and gear, engine panel, all installed at STB steering console.

0313 FRESH WATER

Water capacity approx. 900 l polyethylene, filler on deck. Dual pressure water pump. Semi-rigid pipes with swaged terminals. Water heater with 80 l capacity, heated by engine and / or 230 V AC immersion heater.

Faucets hot / cold in galley and each head / shower. 1x hot / cold shower on bathing platform.

0314 FUEL

Fuel tank with a total capacity of approx. 900 l, filler on deck. Tank made in high grade marine polyethylene, 2x Fuel filters with water separator. Independent fuel supply lines for engine and optional generator.

0315 HYDRAULICS

A manual hydraulic panel is mounted next to the steering position to operate:

- Vang Boom

0317 GREY WATER

Grey water is collected in several grey water boxes with pumps to discharge outboard through one central grey water seacock.

0318 BILGE

Bilge drainage is to be by means of self-priming pumps.

A manual bilge pump will be provided.

Bilge pump equipment detail:

- 3x electric bilge pump 24 V DC WHALE Orca 80 l / min with automatic float switches
- 1 emergency hand operated pump WHALE Gusher Urchin in cockpit
- 1 movable auxiliary suction pump

0319 DECK DRAIN

There will be scuppers installed at PS and at STB, in suitable position with drain overboard.

0320 ENGINE ROOM VENTILATION

The air-intake and discharge will flow through suitable grills, traps to prevent occasional water leaks and water-tight for adverse conditions.

Fire dumpers in air in- and outlets.

Engine room ventilation is arranged as follows.

- Intake: through grid/water trap on stern
- Extraction: through grid/water trap on stern

0324 SEAWATER

Sea chests, to supply sea water to engine and systems. Sea chest will be suitably to provide the maximum demand of all the users. A seacock will be used for the outlet.

0326 EXHAUST

The exhaust exit is installed near the stern.

0400 DECK FIT

0410 DECK HARDWARE

2x electrical HARKEN B70.2STE and 2x manual HARKEN B70.2STA winches. For safety reasons the mainsheet fixing point is as far as possible separated from the guests. A single point mainsheet positioned on aft deck close to steering consoles. Mainsheet is operated by the winches forward of the steering positions.

Self-tacking system to make single hand tacking easy. Track for self-tacking jib with car with equipped with stand-up block. Sheet for self-tacking jib, 2:1 purchase via sheave at mast and halyard block. Aluminum halyard blocks at mast foot. 6x padeyes on bulwark. Jammers (main Halyard, 2 reef lines, jib sheet, gennaker halyard, topping lift).

There are 6 mooring cleats: 2 at the bow section, 2 midships and 2 aft, 2 stainless-steel fairleads in the bow area.

0411 WINDOWS & HATCHES

The fixed flat windows in the deckhouse are made of tempered security glass, safely attached, and sealed off to the deck. All hatches are flush mounted in several positions on deck and coachroof. Large custom carbon flush hatch on aft deck for dinghy storage with inspection hatches.

0412 DECKING

The cockpit area, seating and the walking areas are covered with Eco - friendly synthetic teak material in bleached with black caulking. Decking is vacuum glued. A toe rail is mounted along the entire outer side of the deck.

0413 COMPANION WAY

Manually operating custom acrylic sliding hatch for main companionway with lock and washboard.

0416 RAILING

Pulpits PS and STB are made of stainless-steel with LED navigation lights. Stainless-steel push pit with LED stern light. Stanchions and 2x rail gates.

0417 TRANSOM DOOR

The transom swimming platform opens electrically and offers a lot of space. There are steps from deck level to the swimming platform. A bathing ladder with four steps is stored at the stern bulkhead and can be mounted at the swimming platform.

0421 BOW SPRIT

Integrated carbon bow sprit with stainless-steel anchor roller and fixing point for the code 0 or gennaker, well separated from the forestay.

0423 CONSOLES

2 x steering pedestals PS and STB with instrument consoles, 1 x magnetic compass, 2 x white painted composite steering wheels, special cross spoke design, diameter 1,100 mm, RAL 9010 painted.

0424 LAZARETTE HATCH

Large custom hatch incl. two carbon inspection hatches in aft deck for dinghy storage. The hatch opens electrically.

0425 COCKPIT TABLE

One table with teak top, foldable leaves to extend to one full size dining table. Fixed stainless-steel legs are installed in the cockpit.

0500 - 600 ELECTRIC/ELECTRONICS

0510 CHARGER & INVERTER

VICTRON ENERGY Inverter / Charger 24 V / 8000 VA / 200 A.

Shore power supply 230V AC 50Hz, Inverter with 8000VA total output, and 200A charging power.

Uninterruptible Power supply for all 230V AC Outlets throughout the yacht, automatic switch-over from shore power to Inverter.

0511 DC SYSTEM

24 V DC System managed and controlled by CZone digital switching and manual override functions.

DC consumers: LED navigation lights, LED anchor light, LED deck light, bilge pumps, water pressure pumps, air vents, toilets, refrigerator, interior lighting, direct and indirect plus reading lights, all interior lights can be dimmed.

0516 BATTERIES

24 V DC Service battery bank AGM 8x 12 V / 200 Ah for 800 Ah at 24 V. Individual starter battery for engine, 1 x 12 V / 95 Ah. Separate battery charger for starter batteries.

0700 PAINT

0710 HULL COATING

The hull is painted in white unicolor RAL9010.

0711 DECK COATING

The deck is painted in white unicolor RAL9010

0800 RIGG

0810 MAST

Aluminium mast, Sparcraft. Spreaders swept back. Modern fractional rig, tapered top, anodized. Standing rigging rod. Track to hold jib halyard. Jib furler. Main halyard 2:1, jib halyard 1:1, Self-tacking jib sheet 2:1 purchase, 2 x lazy-jacks 6-in-1, 2x flag lines to first spreader.

0811 BOOM

Aluminium boom from Sparcraft anodized. 2 x single line reefing. Boom vang, hydraulic vang operated by manual handpump.

0900 STEERING

0910 RUDDER

Double rudder system with two semi-balanced rudders made of glass composite, aluminum stocks with self-aligning roller bearings. Bearings and housing are in fully laminated fittings to achieve maximum connection to the hull.

0911 STEERING SYSTEM

Transmission via tubes, gearbox and arms. Emergency tiller, aluminum.

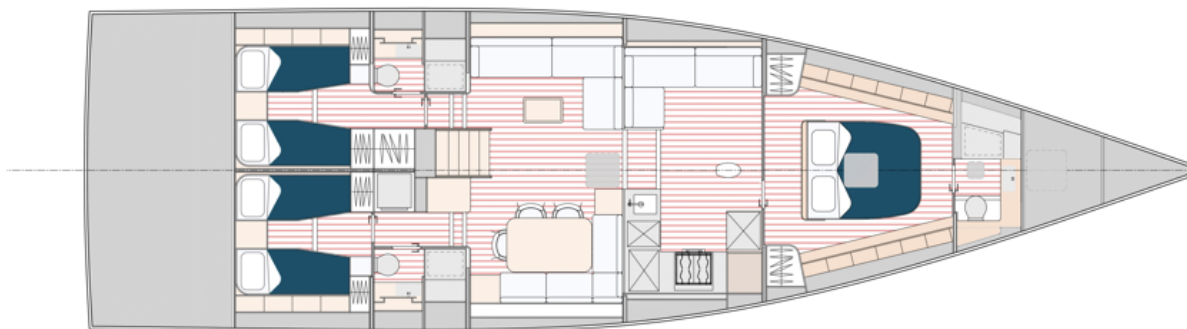
1000 KEEL

The structure of the keel blade shall be cast iron. The bulb to be a lead alloy casting containing 3.5% antimony by weight.

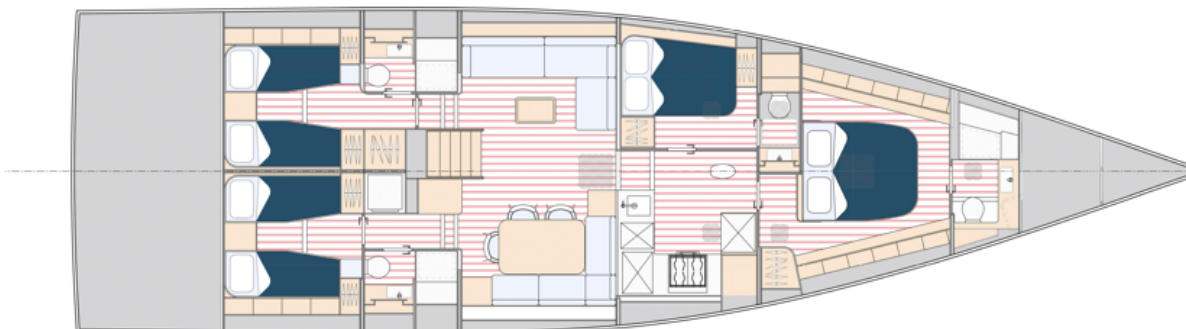
ANNEX 1 TO THE TECHNICAL SPECIFICATION

GENERAL ARRANGEMENT PLAN

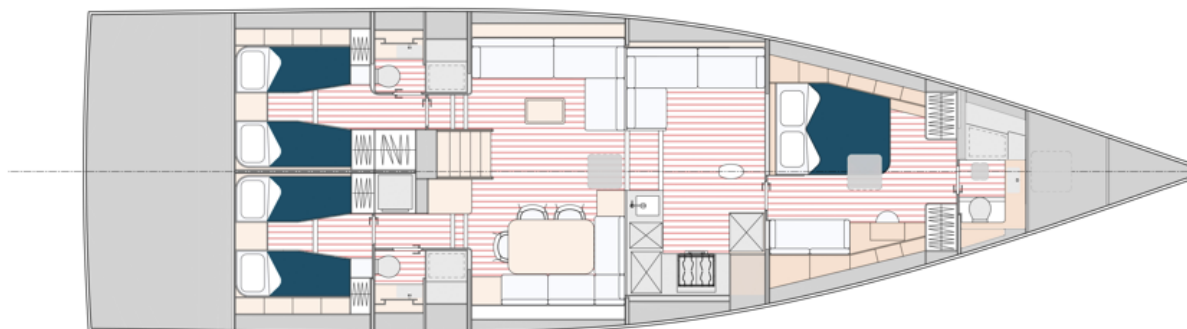
Y6 STANDARD LAYOUT



Y6 LAYOUT 2



Y6 LAYOUT 3



ANNEX 2 TO THE TECHNICAL SPECIFICATION

SIDE PROFILE & DECK PLAN



ANNEX 3 TO THE TECHNICAL SPECIFICATION

SAILPLAN





YYACHTS GMBH

Nordstraße 1 - 17493 Ladebow (Greifswald)

www.yyachts.de

info@yyachts.de